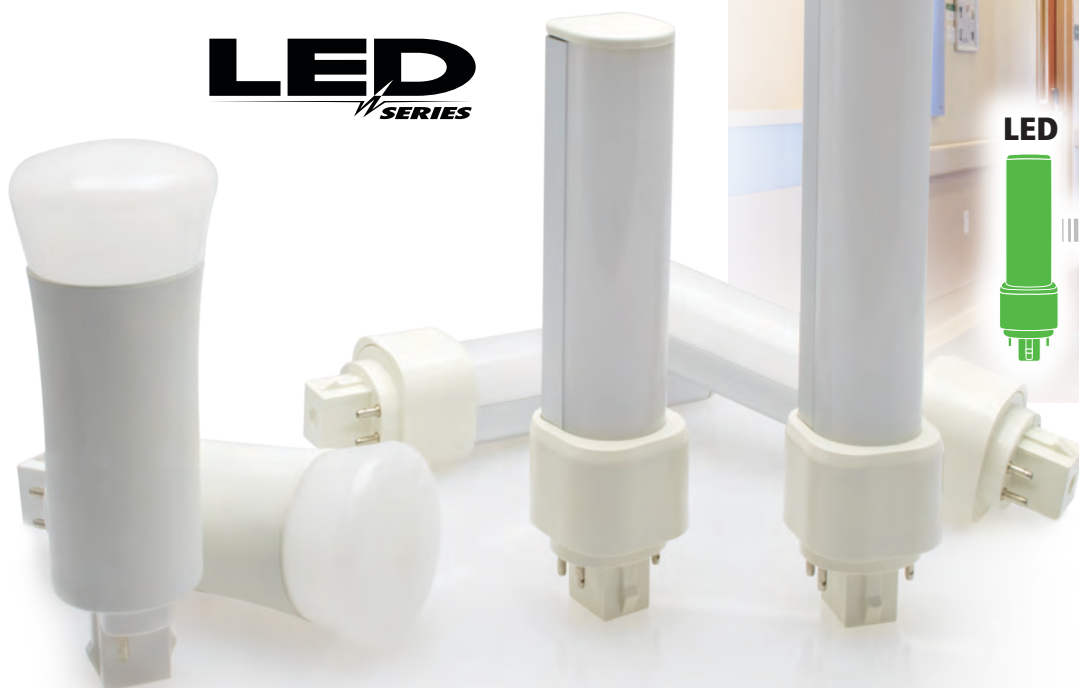




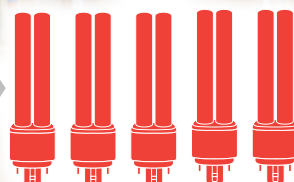
# LED Pin Lamps

Werker LED Pin-Based lamps are direct replacements for CFL pin-based lamps that are widely used in recessed cans and sconces for energy saving illumination. These LED pin-based lamps are easy to install, require less maintenance and last up to 5 times longer than CFL.

## LED SERIES



CFL



One LED is equivalent to 5 CFL Pin

Instant **On**

MERCURY FREE



### Features:

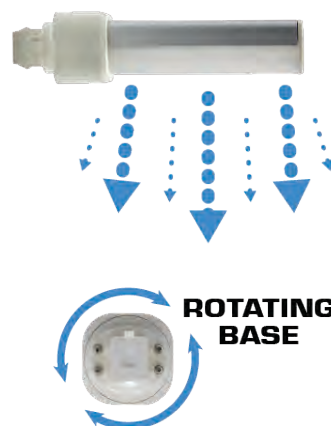
- Long life- up to 50,000 hours - reduces maintenance costs by reducing re-lamping
- Instant on with full light output and consistent color
- Damp location rated
- No UV or IR radiation
- Easy Installation
- Environmentally friendly

#### VERTICAL USE



OR

#### HORIZONTAL USE



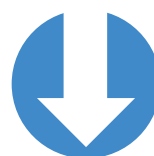
## Switch To LED

5x

Up to 50,000  
hour service life -  
5X that of CFL



Easy Installation



Over 50%  
energy savings vs.  
existing CFL

5  
YEAR

5 Year  
Warranty



# LED Pin Lamps

PROJECT NAME: \_\_\_\_\_

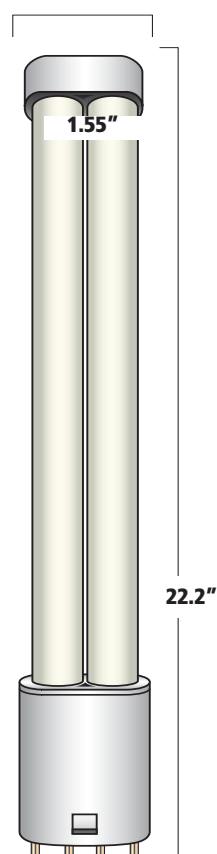
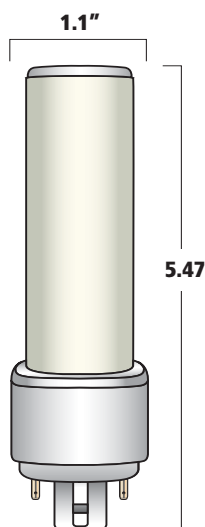
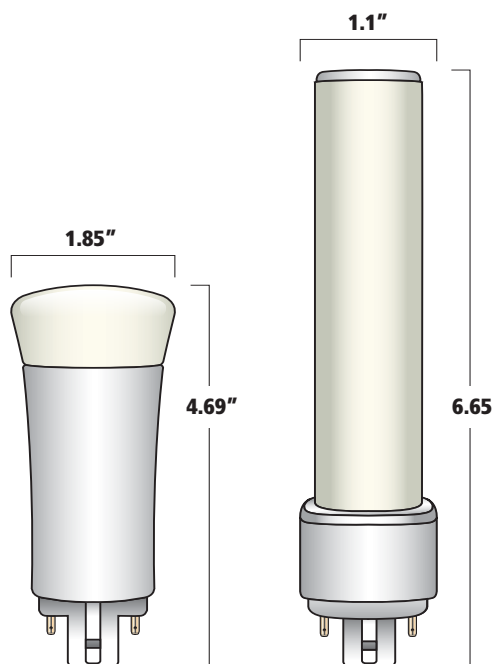
CATALOG # \_\_\_\_\_

FIXTURE TYPE \_\_\_\_\_

NOTES \_\_\_\_\_

Part Number	Watts	CFL Equivalent	Lumens	Color Temperature	Dimensions (LxW Inches)		Orientation	Ballast Type	Dimmable	Base	DLC Certified
LED12301A	9	26W(32W,42W)*	900	4000	6.65	1.1	Horizontal	Electronic	No	G24Q / GX24Q	Yes
LED12302A	9	26W(32W,42W)*	900	4000	4.69	1.85	Vertical	Electronic	No	G24Q / GX24Q	Yes
LED12303A	9	26W(32W,42W)*	950	3500	6.65	1.1	Horizontal	Electronic	No	G24Q / GX24Q	Yes
LED12304A	9	26W(32W,42W)*	850	3500	4.69	1.85	Vertical	Electronic	No	G24Q / GX24Q	Yes
LED12308	9	26W(32W,42W)*	900	4000	6.65	1.1	Horizontal	Magnetic	No	G24D / GX24D	No
LED12309	9	26W(32W,42W)*	900	4000	4.69	1.85	Vertical	Magnetic	No	G24D / GX24D	No
LED12310	9	26W(32W,42W)*	900	5000	6.65	1.1	Horizontal	Electronic	No	G24Q / GX24Q	Yes
LED12311	9	26W(32W,42W)*	900	4000	6.65	1.1	Horizontal	Bypass**	No	G24Q / GX24Q	No

**5 YEAR**  
WARRANTY



## G24Q & GX24Q

Base Types



## G24D & GX24D



## 2G11



\*32w and 42w compatibility is dependent on fixture. Verify lamp performance in fixture



\*\*Universal Voltage: 120-277v with ballast removed  
Installation instructions included with product.  
Non-dimmable. IES files available upon request.

Available Color Temperature

**3500-5000K**

2000K

6000K

Perfect for



Recessed



Sconce

**Batteries + Bulbs**

Distributed by  
Ascent Battery Supply, LLC  
Hartland, Wisconsin 53029 1-888-9 ASCENT  
Visit [www.batteriesplus.com](http://www.batteriesplus.com) for warranty information.